

# Lid

**Bleed**

Background graphics and background colors must extend all the way to the edge, i.e. 3 mm beyond the final edge.

**Final edge**

Final format after cut.

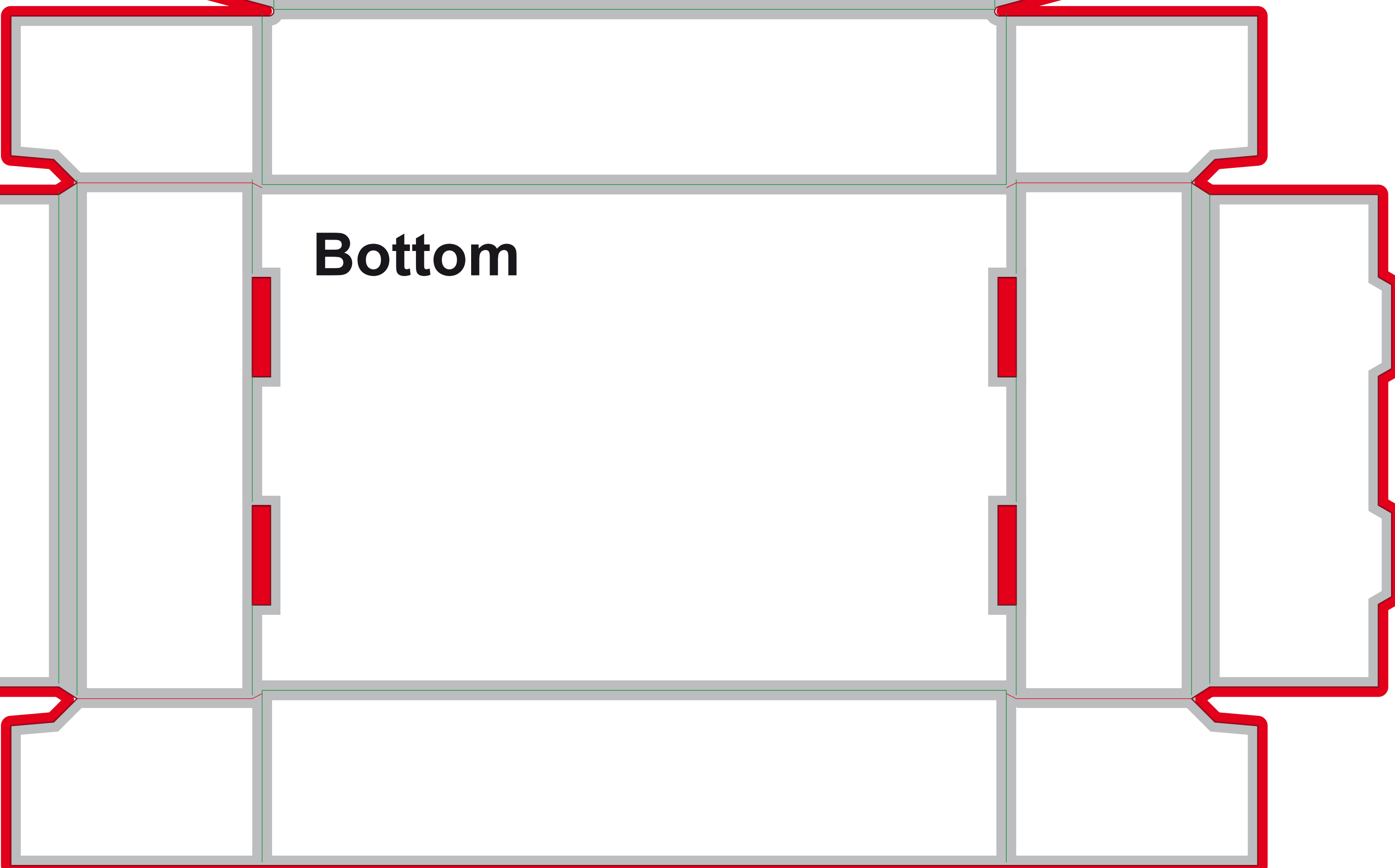
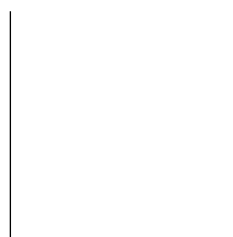
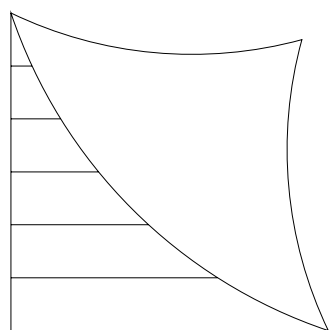
**Fold/bend**

Here the product is folded/bend.

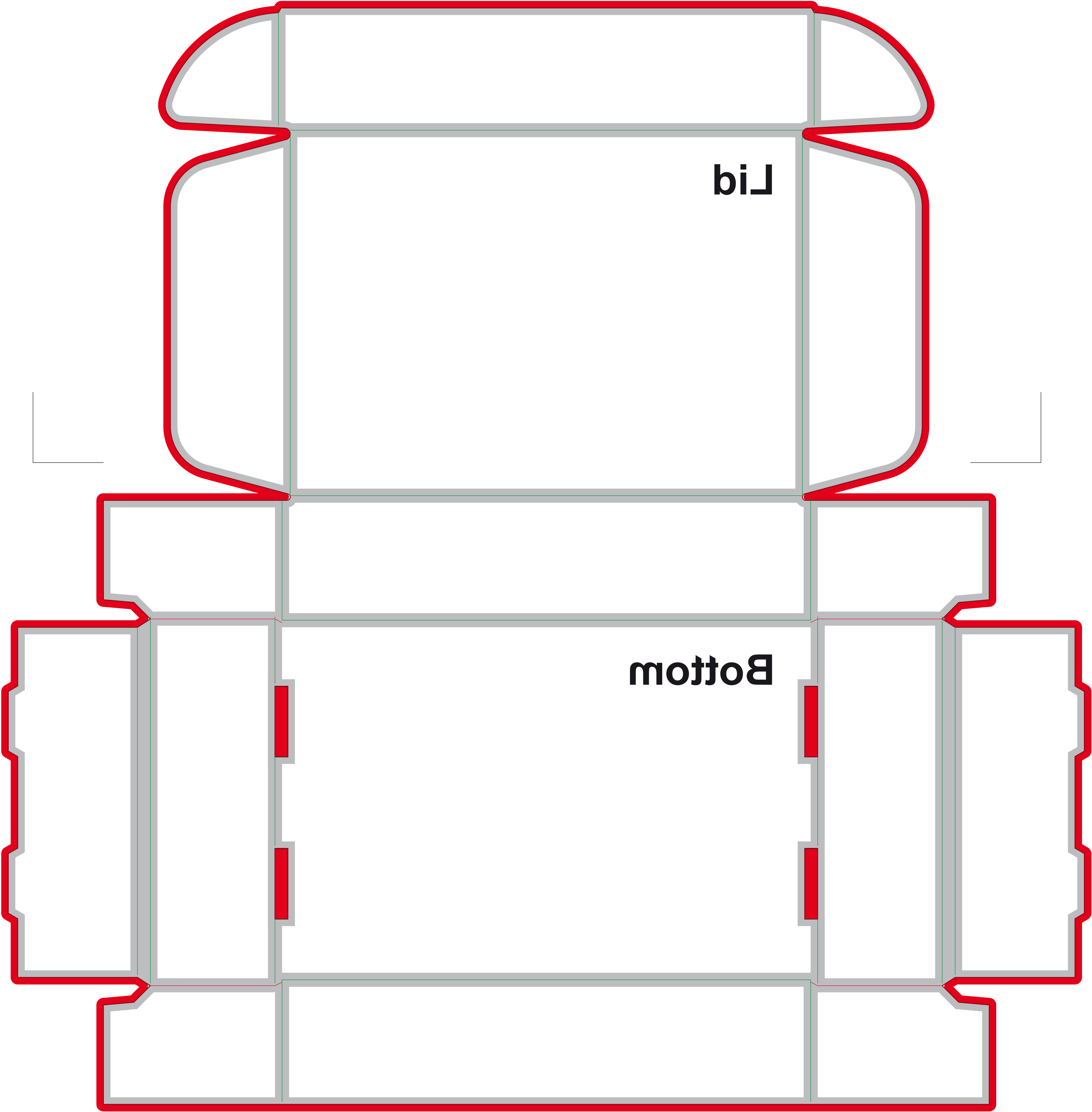
**Safetyzone**

Text and images are placed in the safety zone 3 mm from the final edge.

Remember to remove/delete the "Template" layer before the final print file is generated.



# Bottom



**Lid**

**Bottom**